

PRINT ON DEMAND:

All images in this catalogue are available for Print on Demand. Order any image up to 51" on canvas, fine art paper or quality poster paper.

Our extensive online catalogue is the perfect way to look for art. Start by browsing our website collections and narrow your search by artist, keyword, or subject or size.

You can even create your own PDF Portfolios and send them to our sales team as an inquiry.

Visit www.wildapple.com.



www.facebook.com/buyart.wildapple



www.instagram.com/wildappleart/



www.linkedin.com/company/wild-apple-graphics



www.pinterest.com/wildappleart/



twitter.com/wildappletweet

WILD  APPLE





in the navy

A classic color story, navy is trending in the home. Whether the look is sophisticated and timeless or modern and edgy, navy is an incredible accent neutral color that blends perfectly with white, gray and taupe in both traditional, transition and modern styles.



- 77505 FLOWER POWER II
- 70541 POPPIES ON BLUE
- 32112 SANTORINI II
- 67821 DREAMS

TREND BOARD: IN THE NAVY

designed by: WILD APPLE GRAPHICS



indigold

Do you know what pairs perfectly with navy and indigo? Glorious gold. Warm tones of gold and orangey warm yellows are opposite on the color wheel, and when paired together, create a unified and bold look. We're loving how designers and artists are combining these gorgeous colors into stunning collections of wall decor that add instant impact to every space imaginable.



A: 17328 INDIGO GARDEN II | B: 17327 INDIGO GARDEN I
DAPHNE BRISSONNET

C: 75588 GOLDEN HOUR NAVY
PAMELA MUNGER





A: 56063 BOTANICAL STUDY I GOLD NAVY
B: 56064 BOTANICAL STUDY IV GOLD NAVY
C: 58304 BOTANICAL STUDY II GOLD NAVY
D: 58305 BOTANICAL STUDY III GOLD NAVY
JULIA PURINTON



A: 77504 FLOWER POWER I
B: 77505 FLOWER POWER II
C: 77506 FLOWER POWER III
MEGAN GALLAGHER



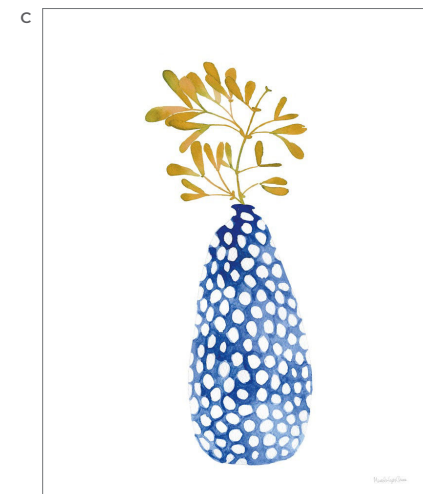
pottery motifs

From blue and white chinoiserie to dots and geometric patterns, pottery and porcelain motifs are a top trend for the wall. Inspired by global styles, this look can be traditional or trend-forward, vintage or modern. From statement pieces to grids and gallery walls, this look is hot in the home.



A: 79457 CIRCLE OF LIFE I
B: 79458 CIRCLE OF LIFE II
C: 79460 CIRCLE OF LIFE IV
D: 79459 CIRCLE OF LIFE III
DANHUI NAI





A: 79532 MODERN NATURE III
B: 79530 MODERN NATURE I
C: 79531 MODERN NATURE II
MERCEDES LOPEZ CHARRO



ART DECOR



A: 79469 SUNDAY BOUQUET I
B: 79470 SUNDAY BOUQUET II
DANHUI NAI

C: 67374 COBALT GEOMETRIC VASES III
D: 67375 COBALT GEOMETRIC VASES IV
MERCEDES LOPEZ CHARRO





go green

Green is one of the most versatile colors for the home. It's the perfect way to bring a touch of the outdoors in and add a relaxing natural vibe to a space. In 2022 green color schemes are reigning supreme with every shade making an appearance with experts confirming it's a great choice to add serenity after a turbulent couple of years.

A: 79319 SWEET BUNNY
PAMELA MUNGER

B: 79889 SPRINKLED WHITE FLOWERS I | C: 79890 SPRINKLED WHITE FLOWERS II
SILVIA VASSILEVA

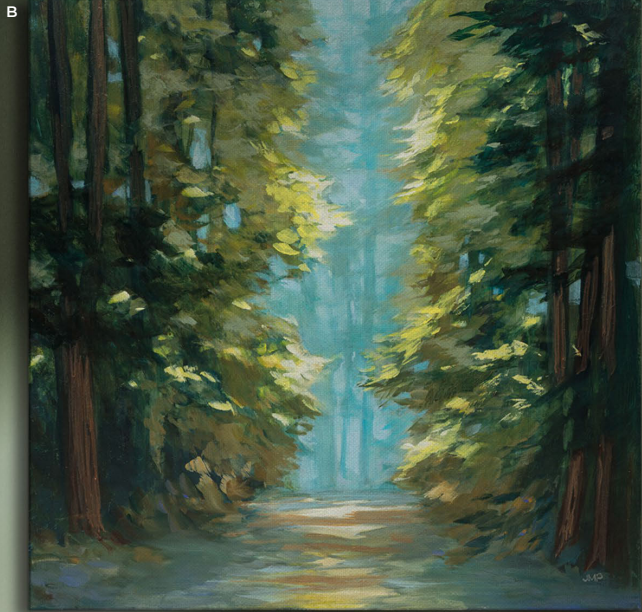


ART DECOR



A: 78300 BLOSSOMS ON SAGE
DANHUI NAI

B: 79246 SUNLIT FOREST
JULIA PURINTON





A: 79972 WATERWAY
PAMELA MUNGER

B: 77793 GENTLE DAY
DANHUI NAI

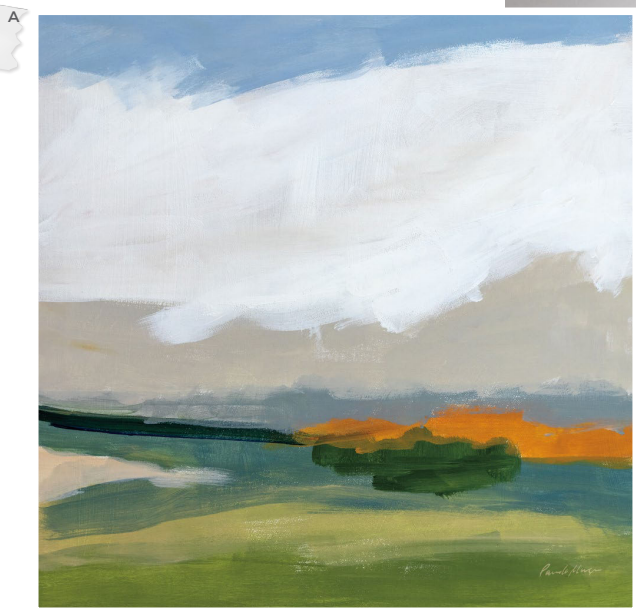


79975 ON THE WAY TO JOSHUA TREE
PAMELA MUNGER



modern landscapes

Bold brushstrokes. Imaginative use of color. Textured canvas. Painterly compositions. These are the components that make up modern landscapes. Our painters are creating new collections of luscious landscapes that feel modern and traditional at the same time. Try landscapes in unexpected places like bathrooms and kitchens, smaller scale in gallery walls or large and bold in living rooms.



A: 79978 SPRING BREEZE
B: 79977 MORNING WALK
PAMELA MUNGER





A: 79976 SECRETS IN THE DESERT
B: 80784 JULY MORNING
PAMELA MUNGER



ART DECOR



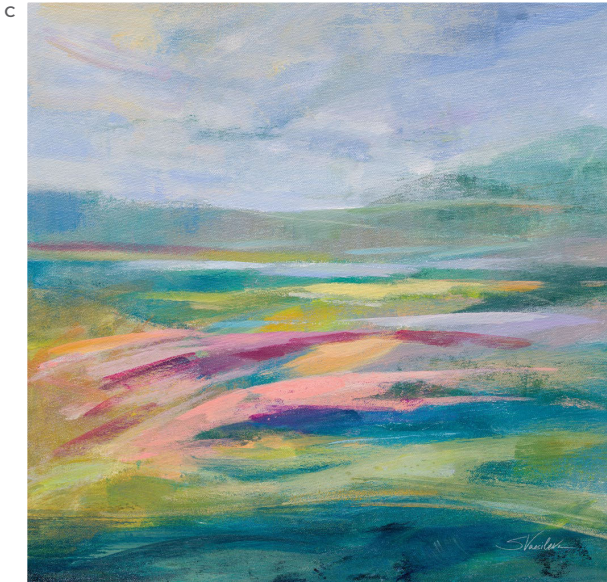
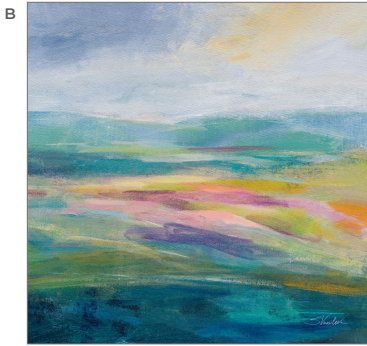
A: 79286 LOST IN THE GRASSES
B: 80147 TO THE SEA
DANHUI NAI



ART DECOR



A: 80785 LANDING
PAMELA MUNGER

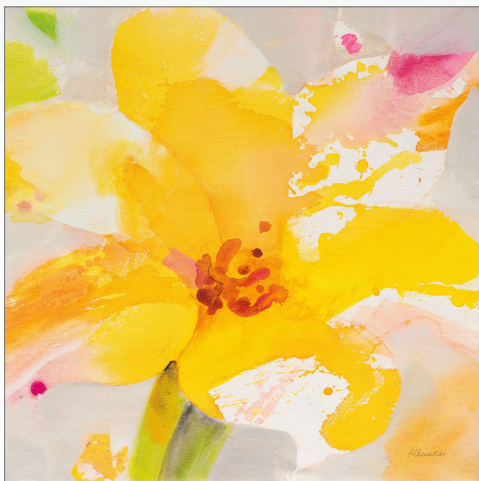


B: 79162 FLOWER HILL II | C: 79161 FLOWER HILL I
D: 79882 FLOWER HILL SUNSET I | E: 79883 FLOWER HILL SUNSET II
SILVIA VASSILEVA

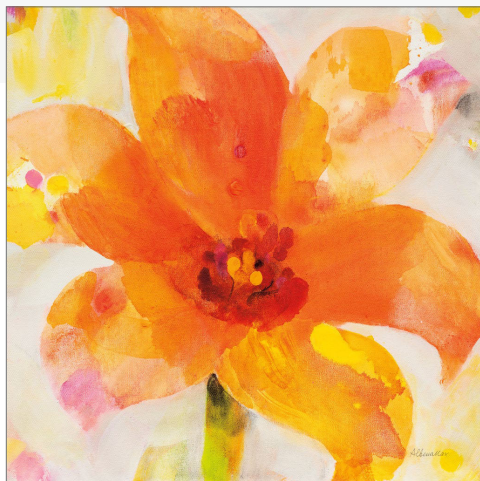


explore more art

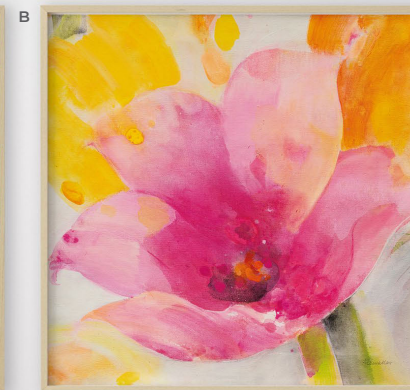
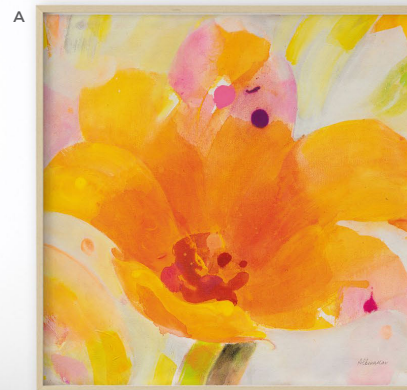
ALBENA HRISTOVA



80165 BRIGHT TULIPS III



80164 BRIGHT TULIPS II



A: 80163 BRIGHT TULIPS I | B: 80166 BRIGHT TULIPS IV
ALBENA HRISTOVA





80046 FLOWER PATCH I



80048 FLOWER PATCH III

CHERYL WARRICK



80137 JEWEL ABSTRACTION III



80132 JEWEL WATERWAY VI

CHRIS PASCHKE



80131 JEWEL WATERWAY V



80138 JEWEL ABSTRACTION IV



A: 79892 WAIT
B: 79893 INCLINATION
CHERYL WARRICK



**cheryl
warrick**

When the viewer engages with a Cheryl Warrick painting, they are seeing more than art. They are experiencing a journey of wisdom where the artist asks the viewer "to look deeper and find a meaning that uplifts the spirit and engages the mind." A mixed media artist, Cheryl is celebrated for her quilt-like paintings that incorporate symbols, archetypes and landscapes. A painter, printmaker and illustrator for over 20 years, her paintings are found in over 50 corporate and museum collections around the world.

[SEE MORE ART](#)



80139 BLISS III



80140 BLISS IV

CHERYL WARRICK



ART DECOR

CHERYL WARRICK



80155 ALCHEMY II

CHERYL WARRICK



79901 NOCTURNE I



79902 NOCTURNE II

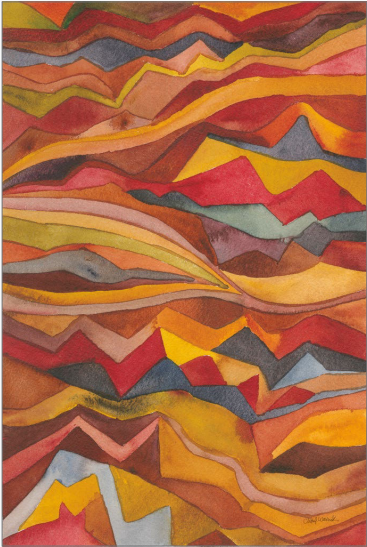
CHERYL WARRICK



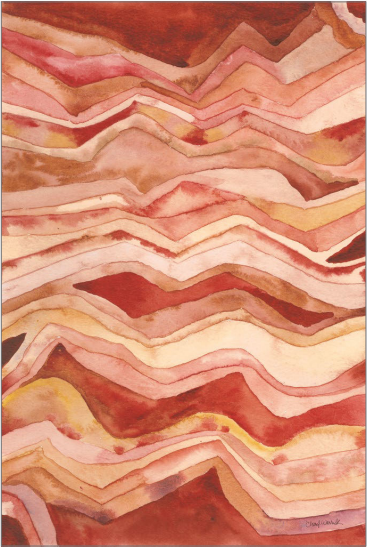
80154 ALCHEMY I

WILD APPLE PORTFOLIO

CHERYL WARRICK



79895 PAINTED DESERT I

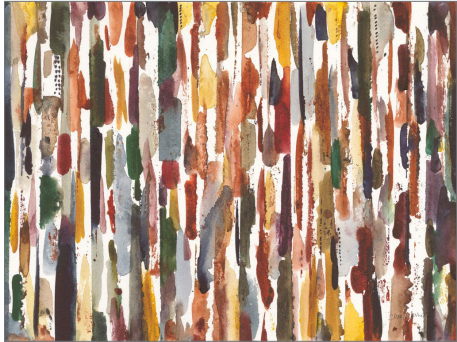


79896 PAINTED DESERT II

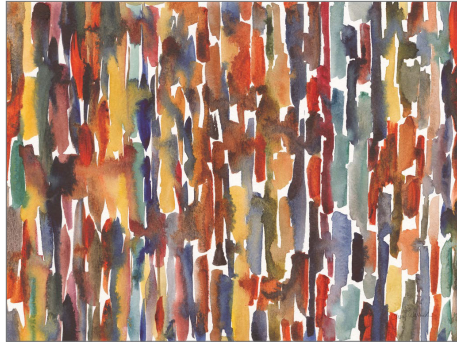


79356 GRAND CANYON NATIONAL PARK

CHERYL WARRICK



79912 STRATA I



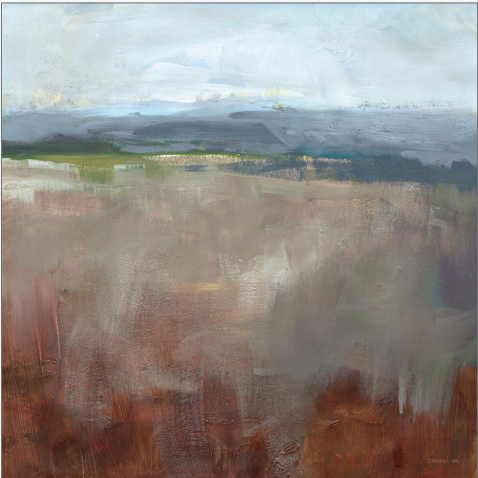
79913 STRATA II

SILVIA VASSILEVA



74916 FALL MOSAIC

DANHUI NAI



79294 MINERAL

DANHUI NAI



79292 SUMMER MOMENT

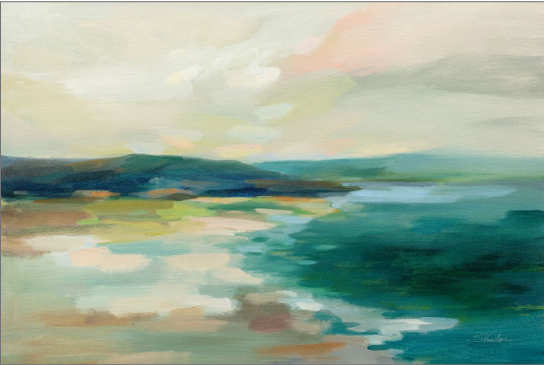
ART DECOR

SILVIA VASSILEVA



79887 MORNING MARINE LAYER

SILVIA VASSILEVA



79884 PASTEL LAKE

74136 SEA GREEN
PAMELA MUNGER



**pamela
munger**

Pamela Munger grew up in southern California and now calls rural western Colorado home. The big sky, mountains and seasons are a constant inspiration for her. "Painting is a lifeline, combining creativity, solitude and limitless possibilities. I'm all about experimentation with paint, surfaces and subject matter. I like to keep it simple, avoiding detail and not giving away the whole story."

Pamela started painting as a creative outlet for her work as an English teacher, which soon grew to a passion. She paints with acrylics, using brushes and palette knives. Pamela and her husband co-own Misty Mountain Hop Farm and she paints full time. If she isn't enjoying the outdoors, you'll find her at her easel.

SEE MORE ART



DANHUI NAI



78724 AROUND THE POINT

SILVIA VASSILEVA



79152 FOGGY LAKE

SILVIA VASSILEVA



77098 EMERALD LAKE



**silvia
vassileva**

Silvia Vassileva pursued her love of art at the Academy of Fine Art in Bulgaria, where she earned both her bachelors and masters degrees. She spent six years painting and exhibiting her work in Japan before moving to the U.S. Silvia describes her style as very free and bold. She makes her paintings come alive by using contrast and unusual color palettes. Silvia's home studio, which she designed herself, is bright, contemporary and minimalist.

SEE MORE ART



A: 80627 BITS AND BYTES
B: 80431 NOT JUST MUSIC
KENT YOUNGSTROM



**kent
youngstrom**

"As an artist I enjoy the struggle as much as the end product." Kent Youngstrom is an artist with a beautifully varied background from interior design to graphics. His art is a journey combining a touch of faith, sentimental imagery and, every once and a while, a laugh, so that the viewer can experience the same emotional passage.

SEE MORE ART

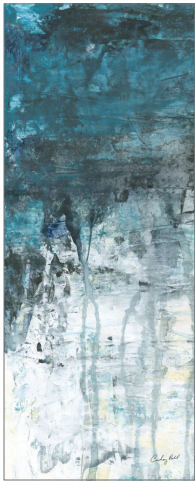
KENT YOUNGSTROM



80586 VIBRANCY



COURTNEY PRAHL



80193 GLACIAL II



80194 GLACIAL III

SILVIA VASSILEVA



79881 OCEAN STORM

CHERYL WARRICK



79908 TOGGLE BLOCKS

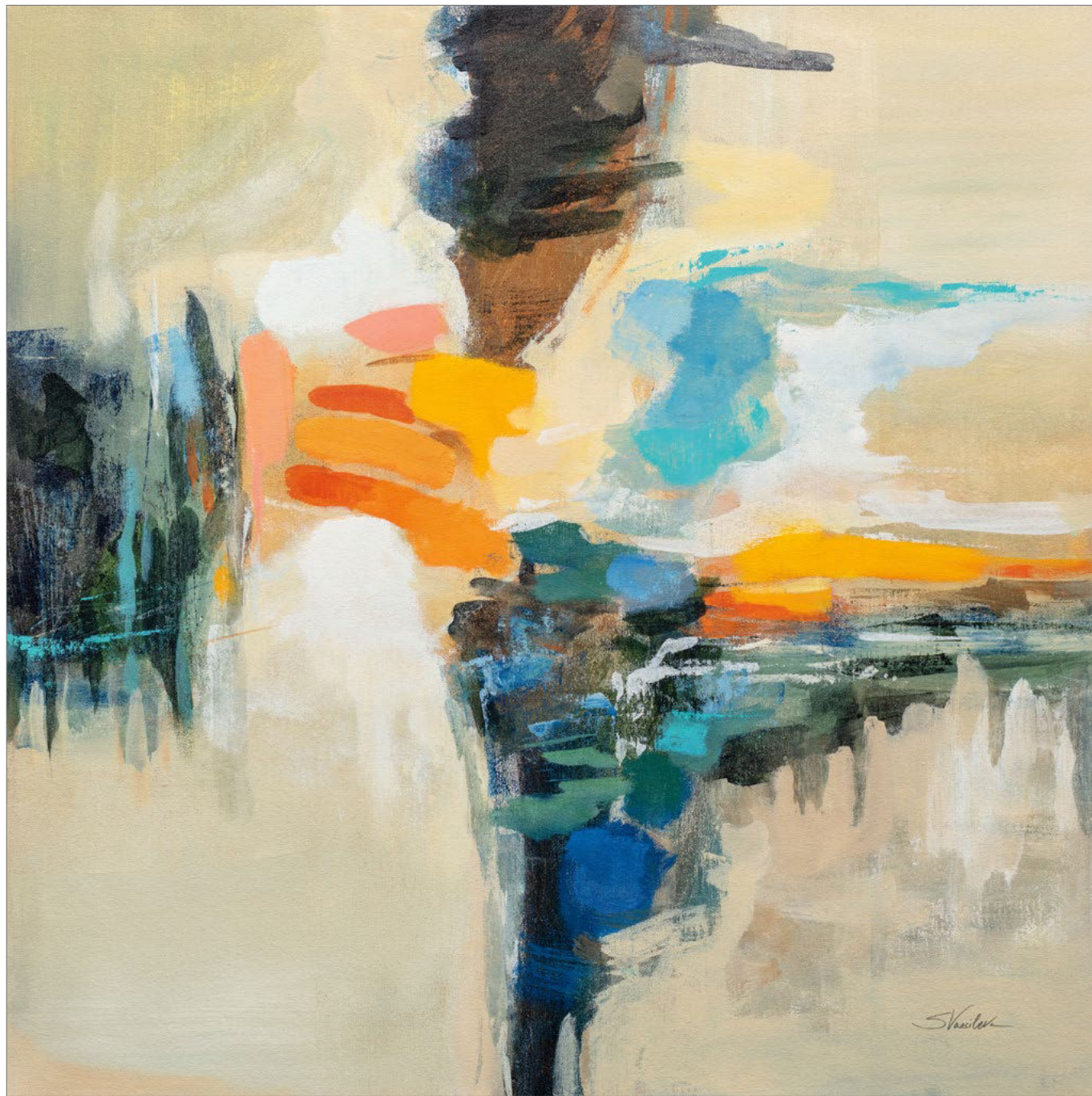


79909 TOGGLE PEBBLES



79894 FLOW





7989T AQUEDUCT | SILVIA VASSILEVA

#BUYART

SILVIA VASSILEVA



77869 JOYFUL TUNE



ART DECOR

MERCEDES LOPEZ CHARRO



79533 WEEKEND PLANTS I



mercedes lopez charro

Mercedes Lopez Charro lives on the beautiful Mediterranean coast of Spain where palm trees grow, vintage cars are seen daily on the school run and the streets are dotted with high-end boutiques. Sketching and doodling for as long as she can remember, her doodles have now become refined illustrations, sold as prints around the world. Trained as a graphic designer, Mercedes uses watercolor and pen and ink to create her colorful illustrations. When she is not drawing or painting, she can be found enjoying life with her English husband, and son Ollie.

SEE MORE ART

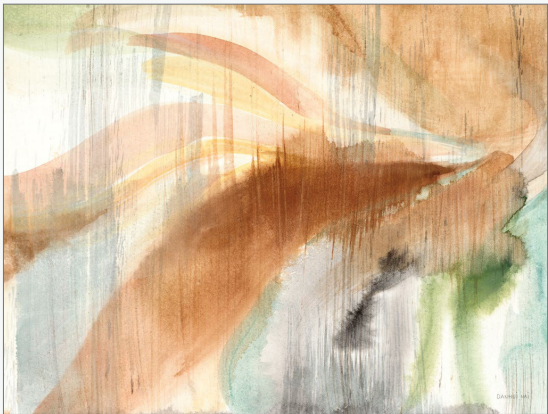


JULIA PURINTON



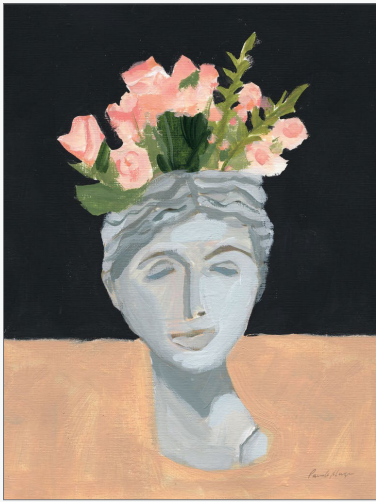
79327 BOTANIST STILL LIFE

DANHUI NAI



80143 DESERT SPRING

PAMELA MUNGER



79971 GODDESS ROSES

DANHUI NAI



80144 A SORT OF VIEW

CHRIS PASCHKE



78866 BUTTERFLY FLOWER I



78877 COLOR SPRAY II



78876 COLOR SPRAY I



78867 BUTTERFLY FLOWER II

DANHUI NAI



80146 LILAC SEASON II



80145 LILAC SEASON I

ART DECOR

DANHUI NAI



78720 HEADLAND WILDFLOWERS

PAMELA MUNGER



79316 SWEET YELLOW

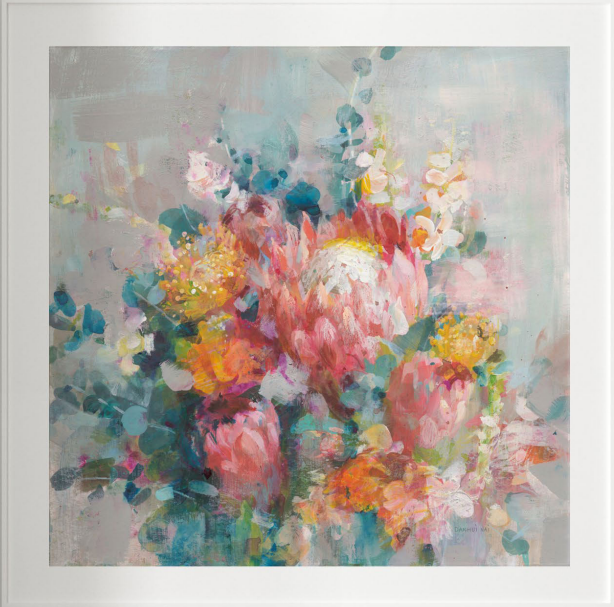
80476 PROTEA BOUQUET
DANHUI NAI



**danhui
nai**

Danhui Nai was born in mainland China and raised in an artistic household with her sculptor father and painter mother. Her natural passion for art was guided through classical training which she applies in her California studio to create beautiful, on-trend artwork in a variety of media. She studied interior design later in Paris and New York City. She worked in the textile industry in Manhattan, where she continued her studies and artistic development.

SEE MORE ART



ART DECOR

NATHAN LARSON



79107 SEPIA SHEEP

NATHAN LARSON



79338 HIGHLAND COW UNDER COVER NEUTRAL



80445 BEAR PORTRAIT
NATHAN LARSON

RYAN FOWLER

A: 79509 SPRINGER BREWING CO
B: 79511 DALMATIAN WINERY
RYAN FOWLER



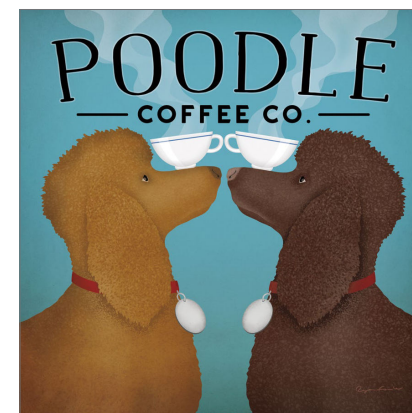
ryan fowler

Ryan Fowler is an illustrator and graphic artist based in Ohio. Ryan received his MFA from Rhode Island School of Design where he studied photography. His artistic process was informed by his study of photography and photographic printing methods, both in the darkroom and on the computer. Ryan uses a hybrid of traditional and modern techniques utilizing drawings, paintings, and computer-based illustration tools. Ryan covers a variety of subject matter with his work including animals, landscapes, children's art, typography and graphic design. His work is inspired by nature, advertising design, and New England and Pacific Northwest iconography.

SEE MORE ART



79510 SPRINGER BURGERS



79452 DOUBLE POODLE COFFEE



79514 BROWN SPRINGER TEA CO



79508 SPRINGER COFFEE CO



WILD APPLE

800 756 8359 (TOLL FREE IN THE US)
802 457 3003 (INTERNATIONAL)
SALES@WILDAPPLE.COM | WWW.WILDAPPLE.COM

ONE LINCOLN CORNERS, SUITE 102
43 LINCOLN CORNERS WAY
WOODSTOCK, VT 05091



PROUD MEMBER OF

ART  COPYRIGHT  COALITION
PROTECTING ART *and* CREATIVITY